

**LPHN3 Antibody (N-term)**  
**Affinity Purified Rabbit Polyclonal Antibody (Pab)**  
**Catalog # AP17661A**

**Specification**

---

**LPHN3 Antibody (N-term) - Product Information**

Application	WB,E
Primary Accession	<a href="#">O9HAR2</a>
Other Accession	<a href="#">O9Z173</a> , <a href="#">O80TS3</a> , <a href="#">O97827</a> , <a href="#">NP_056051.2</a>
Reactivity	Human, Mouse
Predicted	Bovine, Rat
Host	Rabbit
Clonality	Polyclonal
Isotype	Rabbit IgG
Calculated MW	161812
Antigen Region	371-397

**LPHN3 Antibody (N-term) - Additional Information**

**Gene ID** 23284

**Other Names**

Latrophilin-3, Calcium-independent alpha-latrotoxin receptor 3, C1RL-3, Lectomedin-3, LPHN3, KIAA0768, LEC3

**Target/Specificity**

This LPHN3 antibody is generated from rabbits immunized with a KLH conjugated synthetic peptide between 371-397 amino acids from the N-terminal region of human LPHN3.

**Dilution**

WB~~1:1000

E~~Use at an assay dependent concentration.

**Format**

Purified polyclonal antibody supplied in PBS with 0.09% (W/V) sodium azide. This antibody is purified through a protein A column, followed by peptide affinity purification.

**Storage**

Maintain refrigerated at 2-8°C for up to 2 weeks. For long term storage store at -20°C in small aliquots to prevent freeze-thaw cycles.

**Precautions**

LPHN3 Antibody (N-term) is for research use only and not for use in diagnostic or therapeutic procedures.

**LPHN3 Antibody (N-term) - Protein Information**

**Name** ADGRL3 ([HGNC:20974](#))

**Function** Plays a role in cell-cell adhesion and neuron guidance via its interactions with FLRT2 and FLRT3 that are expressed at the surface of adjacent cells (PubMed:[26235030](#)). Plays a role in the development of glutamatergic synapses in the cortex. Important in determining the connectivity rates between the principal neurons in the cortex.

#### **Cellular Location**

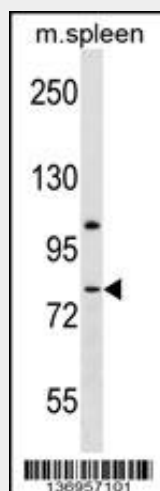
Cell membrane; Multi-pass membrane protein. Cell projection, axon {ECO:0000250|UniProtKB:Q80TS3}. Cell junction {ECO:0000250|UniProtKB:Q80TS3}

#### **LPHN3 Antibody (N-term) - Protocols**

Provided below are standard protocols that you may find useful for product applications.

- [Western Blot](#)
- [Blocking Peptides](#)
- [Dot Blot](#)
- [Immunohistochemistry](#)
- [Immunofluorescence](#)
- [Immunoprecipitation](#)
- [Flow Cytometry](#)
- [Cell Culture](#)

#### **LPHN3 Antibody (N-term) - Images**



LPHN3 Antibody (N-term) (Cat. #AP17661a) western blot analysis in mouse spleen tissue lysates (35ug/lane). This demonstrates the LPHN3 antibody detected the LPHN3 protein (arrow).

#### **LPHN3 Antibody (N-term) - Background**

This gene encodes a member of the latrophilin subfamily of G-protein coupled receptors (GPCR). Latrophilins may function in both cell adhesion and signal transduction. In experiments with non-human species, endogenous proteolytic cleavage within a cysteine-rich GPS (G-protein-coupled-receptor proteolysis site) domain resulted in two subunits (a large extracellular N-terminal cell adhesion subunit and a subunit with substantial similarity to the secretin/calcitonin family of GPCRs) being non-covalently bound at the cell membrane.

**LPHN3 Antibody (N-term) - References**

Arcos-Burgos, M., et al. Mol. Psychiatry 15(11):1053-1066(2010)  
Shimada, M., et al. Hum. Genet. 128(4):433-441(2010)  
Kasperaviciute, D., et al. Brain 133 (PT 7), 2136-2147 (2010) :  
Rose, J.E., et al. Mol. Med. 16 (7-8), 247-253 (2010) :  
Zemunik, T., et al. Croat. Med. J. 50(1):23-33(2009)